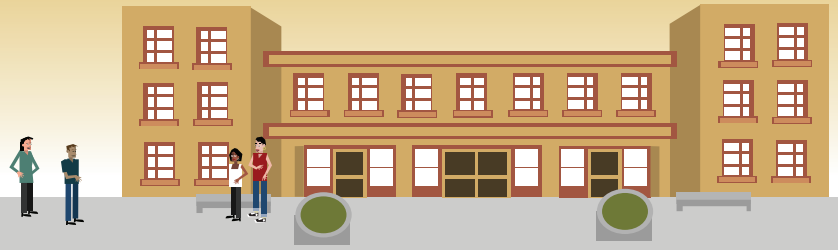


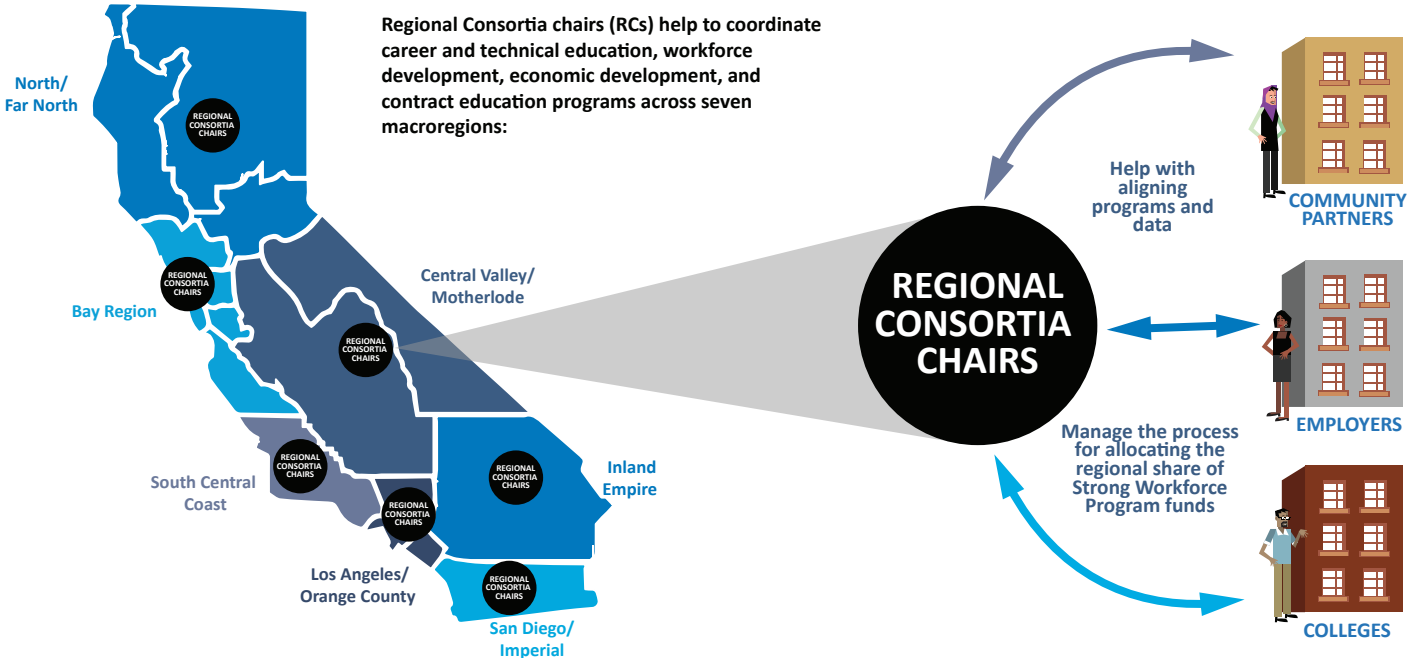
Key Talent Supports for the Strong Workforce Program

The Strong Workforce Program provides \$200 million in new funding to help colleges create more and better career and technical education (CTE) offerings, to meet the demand for a million more people trained for living-wage, middle skills jobs.



Contact information for Key Talent available at doingwhatmatters.ccco.edu/Contact.aspx

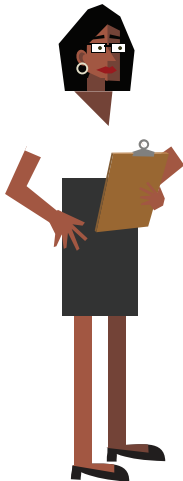
REGIONAL CONSORTIA CHAIRS



SECTOR NAVIGATORS

Sector Navigators work statewide to coordinate with colleges, employers, Regional Consortia chairs, Deputy Sector Navigators, and other technical assistance providers. When colleges need support in building stronger connections to employers or are seeking curriculum models and effective practices, Sector Navigators can offer assistance.

- Coordinate across colleges, employers, and community partners within specific occupational clusters
- Help with engaging employers and developing curriculum
- Work both statewide and regionally, in areas where no Deputy Sector Navigators have been assigned



DOING WHAT MATTERS PRIORITY SECTORS

- Advanced Manufacturing
- Advanced Transportation & Logistics
- Agriculture, Water & Environmental Technologies
- Business & Entrepreneurship
- Energy, Construction & Utilities
- Global Trade
- Health
- Information & Communication Technologies/Digital Media
- Life Sciences/Biotech
- Retail, Hospitality & Tourism

DEPUTY SECTOR NAVIGATORS

Deputy Sector Navigators (DSNs) are the regional contact for specific sectors and work with colleges, employers, Sector Navigators, Regional Consortia chairs, and other technical assistance providers on workforce training and career pathways.

- Work with colleges, employers, and community partners for prioritized sectors
- Develop summaries of industry needs and existing community college programs within occupational clusters
- Work regionally



CENTERS OF EXCELLENCE

Each macro-region has a designated Center of Excellence (COE) that provides customized data on high growth, emerging, and economically-critical industries and occupations and their related workforce needs.

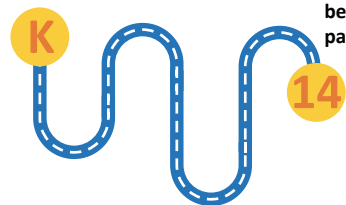
- Provide customized data on industries, occupations, and workforce needs
- Evaluate sources of labor market information to support the Strong Workforce Program
- Work regionally



K-14 PATHWAYS

A network of technical assistance providers has been designated to support the development of pathways between K-12 and community college.

- Work with K-12 institutions and colleges to build career pathways
- Identify intersegmental resources to support the Strong Workforce Program
- Work regionally



DATA EXPERTS

Another network of technical assistance providers has been created to assist in the areas of:

- Building data tools and supporting colleges in using data
- Supporting the development of outcomes metrics
- Providing support directly to colleges and connecting colleges to other Key Talent



TECHNICAL ASSISTANCE PROVIDERS

An additional group of Technical Assistance Providers (TAPs) provide specialized support in the areas of:

- Apprenticeships
- California Career Café
- Contract Education
- Curriculum Approval
- Internships
- Strong Workforce Task Force Implementation

