

# Data, Partnerships, and Support Services...Key strategies to student success

An AEBG TAP Webinar  
October 25, 2017

Debra Jones, Peralta Community College District



Shemila Johnson, Northern Alameda Adult Education Collective

Sherri Watkins, State Center Adult Education Consortium

Cherise Moore, AIR

# Getting Started

---

- No need to call in if you have speakers or a headset
- If you can't hear, click on the speaker icon on the top left of your screen
- Change this  to this 



Cherise Moore  
AIR

# Getting Started

---

- Type in the chat to ask questions or make comments
- Let us know if you are sharing a computer
- This webinar is being recorded



# What is AEBG TAP?

---

- Funded by the AEBG Office
- Sacramento County Office of Education is the grant holder
- Partners
  - AIR – instruction, curriculum, and leadership
  - CASAS – accountability and assessment
  - OTAN – technology integration

# What is AIR?

---

## Our Mission

AIR's mission is to conduct and apply the best behavioral and social science research and evaluation towards improving people's lives, with a special emphasis on the disadvantaged.

# AIR for AEBG TAP

---

AIR will provide technical assistance and professional development events that build the capacity of consortiums to:

- Offer effective instruction in the program areas
- Align curriculum and student services for seamless transitions
- Support learner college and career readiness
- Develop exemplary leaders

# Plan for the Session

- Making Connections Overview
  - Data
  - Partnerships
  - Support Services
- Consortium Perspectives: Experiences and Examples
  - Northern Alameda Adult Education Collective
  - State Center Adult Education Consortium
- Wrap Up and Closing



# Our Presenters....

- Debra Jones

- Peralta Community College District



- Shemila Johnson

- Northern Alameda Adult Education Collective



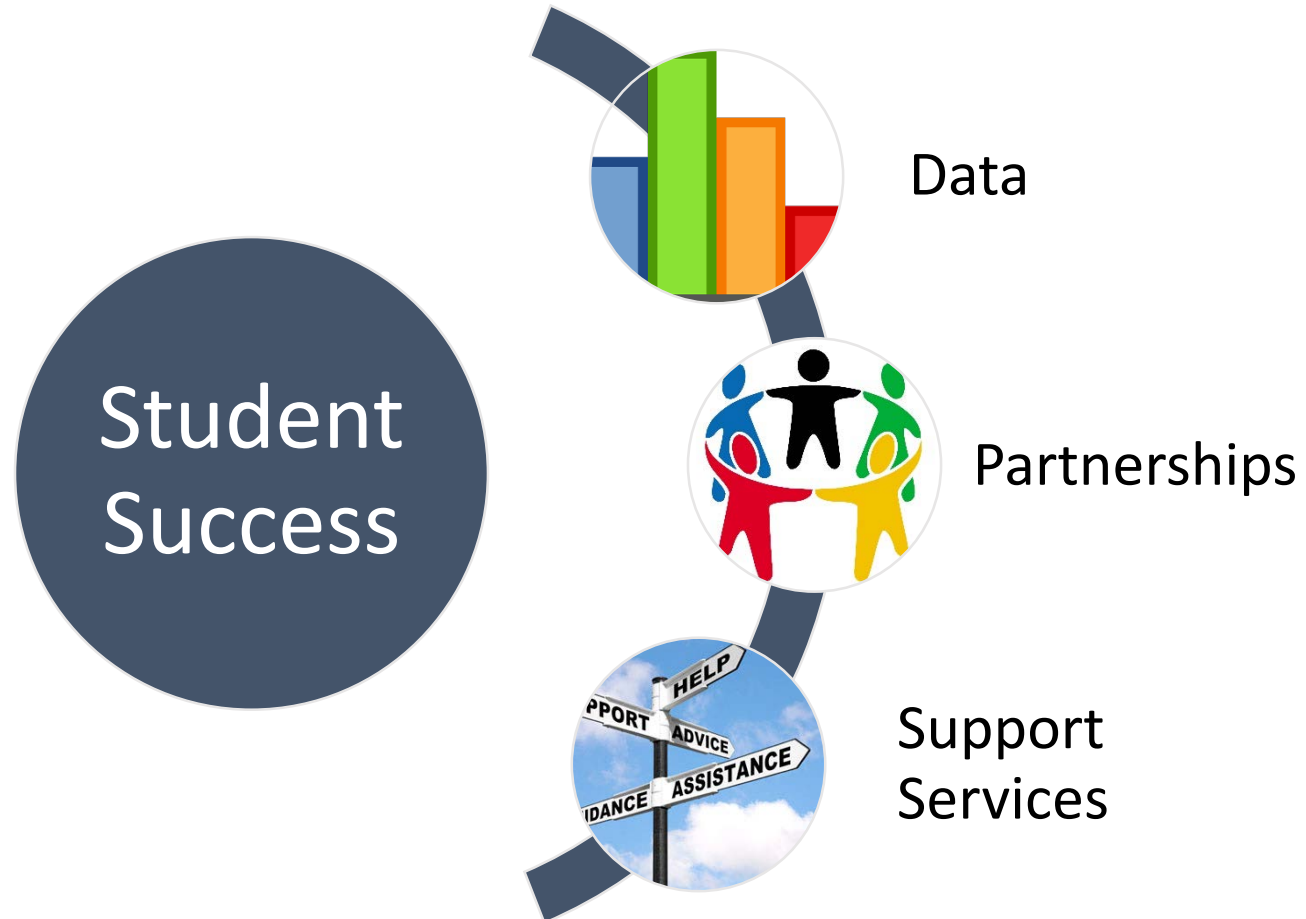
- Sherri Watkins

- State Center Adult Education Consortium





# Making the Connection...



# Using Data...Unemployment Is 4.2%

Bureau of Labor Statistics, 2017

MEN (Age)	White	Black or African American	Asian	Hispanic
16-19	12.6	33.1	14.0	12.6
20-24	7.2	13.0	8.9	6.5
25-34	3.7	7.7	2.7	4.0
35-44	2.6	5.3	2.3	2.6
45-54	2.7	4.3	2.1	2.9
55 and over	2.6	4.3	3.3	3.9
Women (Age)	White	Black or African American	Asian	Hispanic
16-19	12.1	19.6	18.0	15.5
20-24	5.4	8.8	5.9	7.7
25-34	3.7	7.2	3.4	5.3
35-44	2.8	7.1	3.0	3.8
45-54	3.2	5.5	3.2	5.0
55 and over	2.8	5.0	3.3	4.6

# Partnerships

- Traditional Partners
  - Workforce
  - Education
  - Community Based Organizations
  - Philanthropy
- Nontraditional Partners
  - Researchers
  - Critics
  - Advocacy Groups

# Support Services

- A Strengths Based Model – Student as part of family and community
  - Physical
  - Emotional
  - Economical
- Support Services in Unexpected Places
  - Industry
  - Community Based Organizations
  - Community Politicians

# Shemila and Sherri...

- Can you give us an overview of your regional consortia?

# Northern Alameda Adult Education Collective

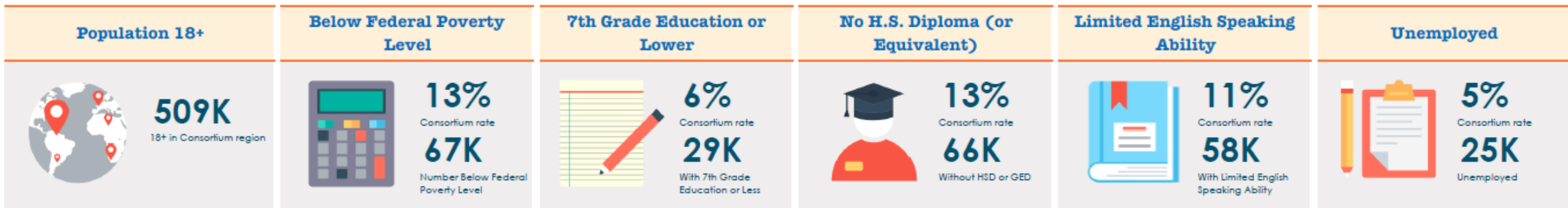


Shemila Johnson, Executive Director

October 25, 2017

# Demographics

- NAAEC has 10 members:
  - 4 adult schools
  - 4 community colleges
  - 1 college district
  - 1 county office of education
- We are one of three Alameda County Consortia.

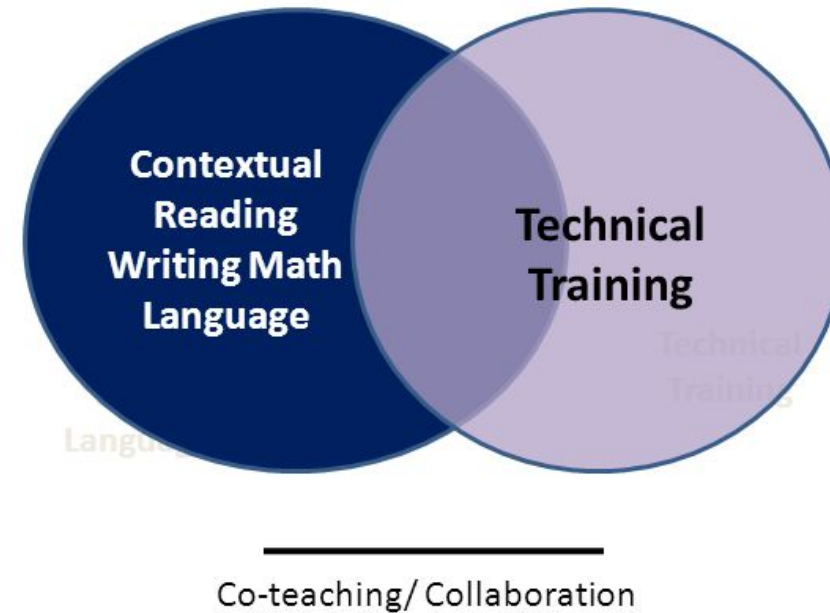


# Programs

- Co-teaching model.
- Concurrent enrollment model.
- CBO committee model.

## I-BEST Model

(Integrated Basic Education and Skills Training)







# State Center Adult Education Consortium

*Connect • Collaborate • Create*

Sherri Watkins, Executive Director

Visit our Website: <http://adulthoodconnect.org/>

## SCAEC Consists of:

- 14 Adult Schools
- 3 Community Colleges
- 2 Community College Centers
- 2 Regional Occupational Programs
- 1 Adults in Corrections Program

## Our Partners:

- Fresno Regional Workforce Development Board
- Workforce Development Board of Madera County



# SCAEC Regional Demographics

- Fresno and Madera Counties have a combined population of 1,134,612 and covers a space of 8,164 square miles.
- Poverty levels as high as 25.2%
- Over 25% of individuals age 25 and older do not have a high school diploma or equivalent
- 81.4% do not have a bachelor's degree
- Estimated 44.1% of the population speaks a language other than English.
- 5.3% of Fresno County and 7.7% of Madera County estimated as unauthorized immigrants.

# Take the Poll Now!

- How many members are in your consortium?

# Data Impacts Student Success

# Data & Accountability Specialist



- Assists school staff with collecting the required AEBG data
- Administers CASAS tests
- Enters data into TOPSPro Enterprise
- Runs AEBG reports
- Works with ASAP student attendance system and TE to transfer data and assists school personnel with ASAP, TE and Community Pro.
- The consortium provides testing materials and helps set up online CASAS testing at various sites

# Data in Program Planning

- Marketing efforts.
- Focus Groups.
- Labor market research.



DATA



KNOWLEDGE



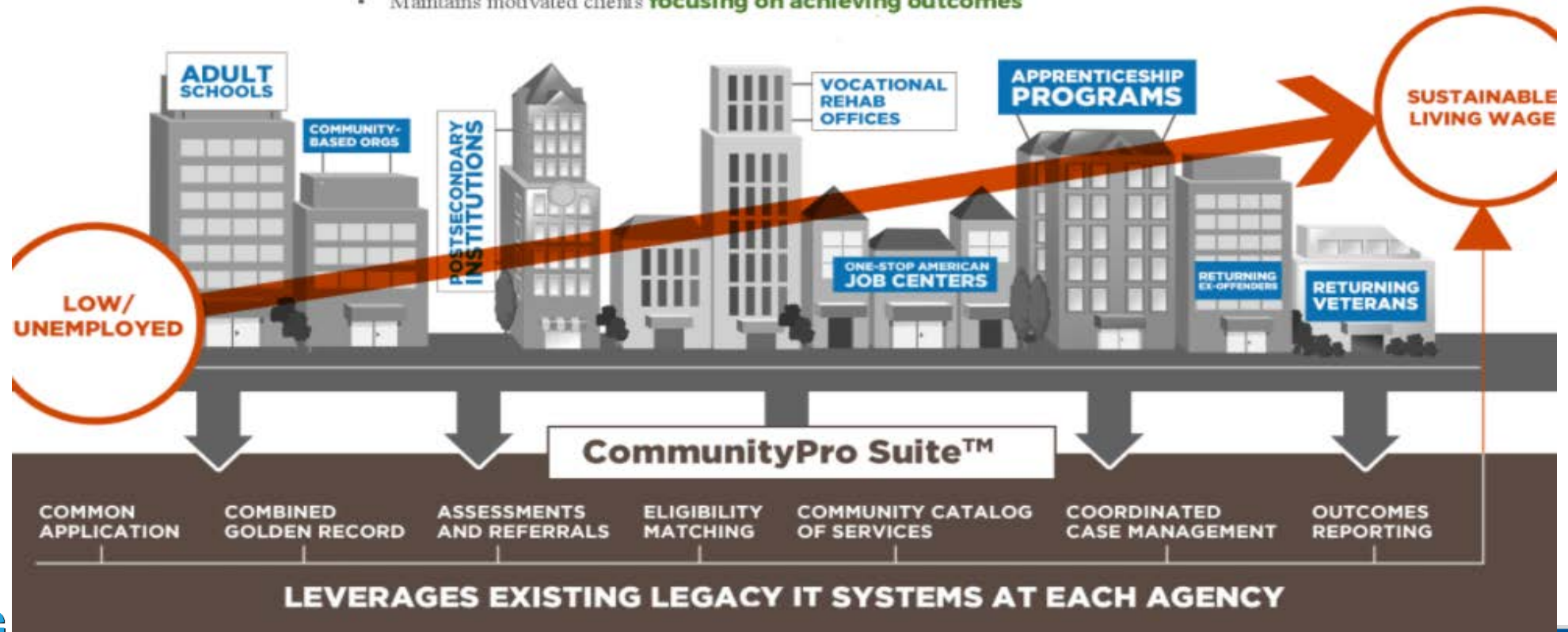
ACTION



# CommunityPro Suite

## CommunityPro Suite Empowers Collaborative Impact Coalitions

- Coordinated continuum of care
- Optimally sequenced services
- Maintains motivated clients **focusing on achieving outcomes**





# Strong Partnerships Impact Student Success

# Partnerships

## 1. Network with college departments:

- Basic Skills committee
- Strong Workforce team
- Workforce Development department
- ESL department
- Career Centers
- Student Support programs

## 2. Invite Industry partners:

- Workforce Development Board
- Booming industry companies in your region

## 3. Invite CBO partners

## 4. Attend community events:

- Job fairs
- Industry events
- Community Day celebrations

# English Language Learner Grant Partners

## Madera County Workforce Investment Corporation

- One-Stop community resource center
- Provide direct services or information and resources for job seekers, youth, employers and community members seeking assistance.

## State Center Adult Education Consortium

- Provide basic education, ESL and citizenship courses and short-term career technical education training for adults 18 years and older.

## Fresno Regional Workforce Development Board

- Educate, train and place individuals with the necessary resources and skills to fulfill employer needs.
- Connect job seekers to valuable services.

# Madera Workforce Assistance Center



# American Job Center of California



Housing Authority  
of the  
City of Madera



# Successful Partnerships Enhance Adult School CTE Courses



# Student Support Services Impact Student Success

# State Center Adult Education Consortium Transitional Team

## Central Region

**Oscar Hinojosa**

Transitions Specialist

(559) 545-8312

[oscar.h@statecenter.com](mailto:oscar.h@statecenter.com)

Caruthers, Central,  
Fresno, Fresno City College,  
FCOE Adults in Corrections, Washington,  
Fresno Workforce Connection

## Clovis Region

**Pang Vangyi**

Regional Transitions Counselor

(559) 573-4638

[pang.vangyi@statecenter.com](mailto:pang.vangyi@statecenter.com)

Clovis, Clovis Community College, Sierra,  
Fresno Workforce Connection  
Madera County Workforce Assistance Center,  
Reedley Workforce Connection,  
Selma Service Center – Proteus, Inc.  
Sanger Service Center – Proteus, Inc.

## North Region

**Michelle Santesteban**

Transitions Specialist

(559) 593-0993

[michelle.s@statecenter.com](mailto:michelle.s@statecenter.com)

Chawanakee, Golden Valley,  
Madera, Madera Center, Yosemite,  
Madera County Workforce Assistance Center

## South Region

**Mary Lopez**

Transitions Specialist

(559) 776-7919

[mary.lopez@statecenter.com](mailto:mary.lopez@statecenter.com)

Dinuba, Kings Canyon, Reedley College,  
Sanger, Selma, Valley ROP,  
Reedley Workforce Connection,  
Selma Service Center – Proteus, Inc.  
Sanger Service Center – Proteus, Inc.



# Transition Support Services

## Adult Schools

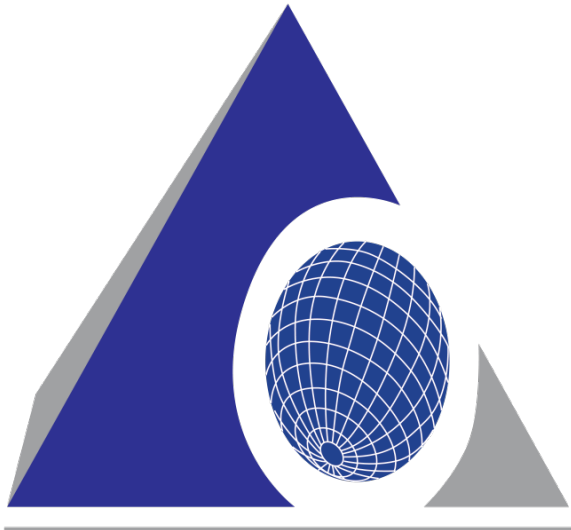
- **Academic and Career Advising**
- **Educational and Career Training Options**
- **Career Exploration**
- **Community Resource Referrals**
- **College Admission Application Assistance**
- **Financial Aid Assistance**
- **Personal & Career Goal Setting**
- **Explore Current Job Opportunities**
- **Provide Job Search Resources**
- **Review Post Secondary Options**
- **Referrals to Community Resources**

## Workforce Centers

- **Partnership**
- **Collaboration**
- **Two Way Referral System**
  - **Ell Navigator Support**
- **Services**
  - **Job Search Assistance**
  - **Career Training**
  - **Community Referrals**
  - **Career Counseling**
  - **Follow-up Services**

# Student Support Services

- 5% consortium funds set aside annually for CBO partnerships:
  - Mental Health services partnership.



- Job Development services partnership.

# Support Services Challenges

- Duplication of general college support services for AEBG students.
- Funding support services.

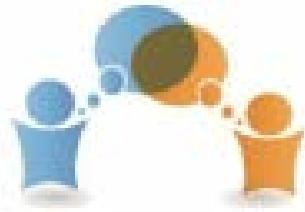


# Final Thoughts

# Takeaways

- Advocate for colleges to institute adult schools in K12 efforts.
  - Concurrent enrollment policy
  - Multiple measures for assessment
  - Dedicated counselor
  - Outreach events to include adult populations
- Invite yourself to the table.





State Center  
Adult Education  
Consortium

*Connect + Collaborate + Create*

**Regional Consortium**



CALIFORNIA COMMUNITY COLLEGES  
**Doing What MATTERS™**  
FOR BUSINESS AND INDUSTRY

**SAVE THE DATE!**

**REGIONAL EDUCATION AND  
WORKFORCE RESOURCES SUMMIT**

**Friday, November 17, 2017**

**8:00 am - 1:00 pm**

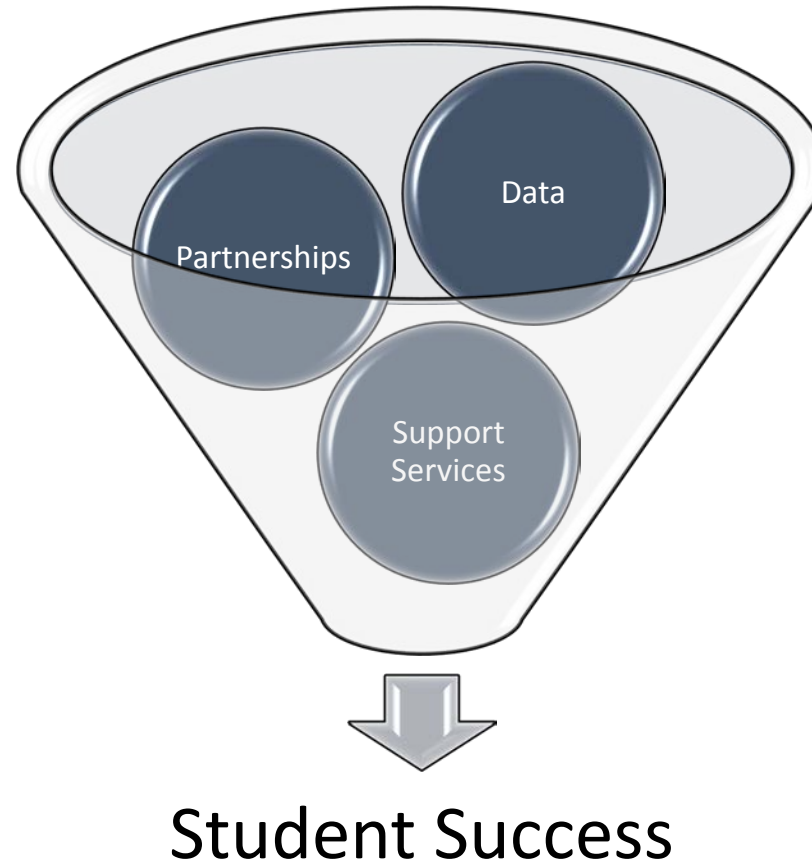
Summit from 8:00 am - 11:45 am

Networking Lunch from 11:45 am - 1:00 pm

**The Radisson Hotel and Conference Center  
Fresno, California**

# Wrap Up

- Link, Align, and Leverage Resources
  - Data
  - Partnerships
  - Support Services



# Let's Chat...

- What is the takeaway from today's presentation that will help you impact student success?



# Thank You

## Contact information:

Debra Jones, Director, Economic and Workforce Development  
Peralta Community College District  
[debrajones@peralta.edu](mailto:debrajones@peralta.edu)

Shemila Johnson, Executive Director  
Northern Alameda Adult Education Collective  
[srjohnson@peralta.edu](mailto:srjohnson@peralta.edu)

Sherri Watkins, Executive Director  
State Center Adult Education Consortium  
[sherri.watkins@statecenter.com](mailto:sherri.watkins@statecenter.com)

Watch for upcoming PD events at [www.aebg.org](http://www.aebg.org)