

California Adult Education Facts

8.2%

Unemployment rate in 2016 for individuals with less than a high school diploma or equivalency



2.7%

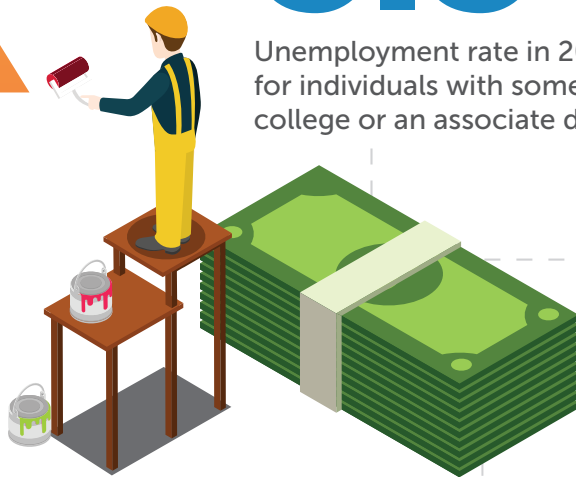
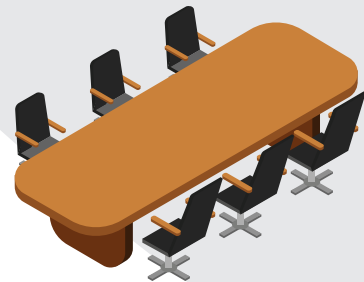
Unemployment status is greatly affected by level of education with a difference of 2.7 percentage points between those without a high school diploma or equivalency and those with some college or an associate's degree. The state annual average unemployment rate in 2016 was 5.5%.

7%

Unemployment rate in 2016 for high school graduates (includes equivalency)

5.5%

Unemployment rate in 2016 for individuals with some college or an associate degree



3.6%

Unemployment rate in 2016 for individuals with a bachelor's degree or higher



18%

Percentage of the population aged 25 years and older that do not have a high school diploma or equivalency.

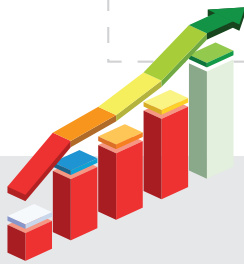
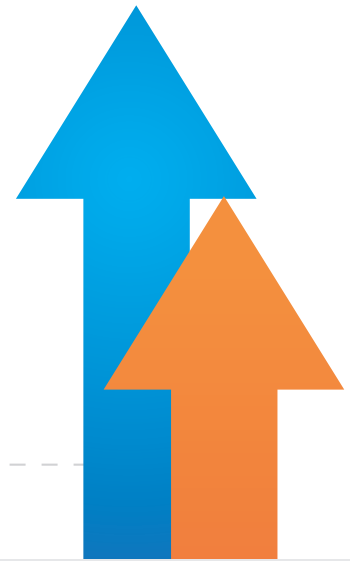


26%

Poverty rate for individuals without a high school diploma which is 10.3% higher than those with a high school diploma (15.7% poverty rate) and 15% higher than those with some college or an associate degree (11% poverty rate).

27%

California has the highest proportion of immigrants of any state with immigrants making up 27% of the total population.



\$20.2 billion



California leads the nation with 784,584 immigrant entrepreneurs making up 38.4% of the state's entrepreneurs. These immigrant-owned businesses represented \$20.2 billion in annual business income in 2014.

44.6%

Percentage of new business founded in California that were founded between 2007-2011 (immediately following the Great Recession).



71%

Percentage of individuals aged 25 years or older without a high school diploma that are foreign born while immigrants make up only 36% of the population aged 25 years and older meaning immigrants make up a disproportionately large portion of individuals in need of adult education.



\$27,963

\$27,963 median earnings for an individual in California with a high school diploma and 41% increase in earnings as compared to an individual in California without a high school diploma.



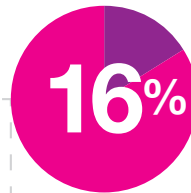
\$36,284

Individuals with some college or an associate degree, median earnings increase another 30% to \$36,284.

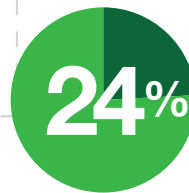


80%

80% of students entering Community Colleges enroll in at least one developmental course in math, English or both. **Adult education programs focus on better preparing adults to enter college and successfully reach their educational goals.**



Percentage of developmental students who earn a certificate or associate degree within 6 years



Percentage of developmental students who successfully transfer to four-year colleges



50%

Percentage of jobs that are middle skills job in California requiring more than a high school diploma, but less than a four-year college degree.



11%

11% gap in middle skill jobs as compared to middle skills workers. 39% of California's workforce are middle skilled workers, while 50% of jobs require middle skills, leaving an 11% gap.

