



Why Do My Data Reports Look Different: AEP Dashboard and TOPSpro Enterprise *(and a little bit of COMIS too)*

May 12, 2021
1:00pm – 2:00pm

Today's Presenters



Jessica Chittaphong

AEP Dashboard Manager &
Program Coordinator

jchitta@wested.org



Blaire Willson Toso

Sr. Program Manager
Adult Ed & Workforce Dev

btoso@wested.org



Jay Wright

California Accountability Program
Manager

jwright@casas.org

Is this the right webinar for me?

Goals for Today

Learn about:

1. Key features of the AEP Dashboard, COMIS Data Sets, & CASAS TOPSpro Enterprise.
 2. Uses of the AEP Dashboard, & CASAS TOPSpro Enterprise reports.
 3. How CASAS TOPSpro Enterprise metrics map to the AEP metrics.
- Introduction to AEP Dashboard: Review April 30 Webinar: Understanding & Using the Adult Education Pipeline
 - Changes to the AEP: Review April 27 Webinar: Understanding and Using the Adult Education Pipeline (AEP) Dashboard for Continuous Improvement

Key Features

	COMIS	TOPSpro Enterprise	AEP Dashboard
Institutions	Noncredit Community College (WIOA II) Noncredit Community College (non-WIOA II)	Noncredit Community College (WIOA II) Adult Schools	Noncredit Community College (WIOA II) Noncredit Community College (non-WIOA II) Adult Schools
Coding Resource	MIS Metrics Data Dictionary	WIOA II Data Dictionary Participant Individual Record Layout (PIRL)	AEP Metrics Data Dictionary
Updated	Semester & Yearly	Quarterly	Yearly
Track Data	Semester	Ongoing	Yearly
Verify & Review	DataMart Semester & Yearly COMIS Report Yearly & Submit Corrections	CAEP Reports: Quarterly & Yearly	Data on Dashboard Yearly

Key Features

Purposes	COMIS	TOPSpro Enterprise	AEP Dashboard
Adult Learner Population	Non-credit community college participants	WIOA II Noncredit community college participants Adult School participants	All CAEP participants Regions Consortium College Districts
Verification & Validation	Logic checks	Automated validation Data Integrity Reports	Match between institutions Deduplication EDD UI Verification
	track regularly	track regularly	Track annually
Uses	Ongoing Continuous Improvement Tracking Outcomes Planning	Ongoing Continuous Improvement Tracking Outcomes Planning	Planning Evaluation Trends Outcomes Equity
Data informs	COMIS	CAEP WIOA NRS	CAEP Yearly Legislative Reports
Data display	Data charts	Data charts Dashboards Drill downs	Data charts Graphs Drilldowns Comparison levels

More About AEP Verification & Validation



Transitions



Enrollments



Earnings



Time Lags

Inquiring Minds Want to Know...

On the Adult Education Pipeline:

- How are metrics identified?
- How are metrics calculated?
- Why are metrics added?
- Why are metrics changed?



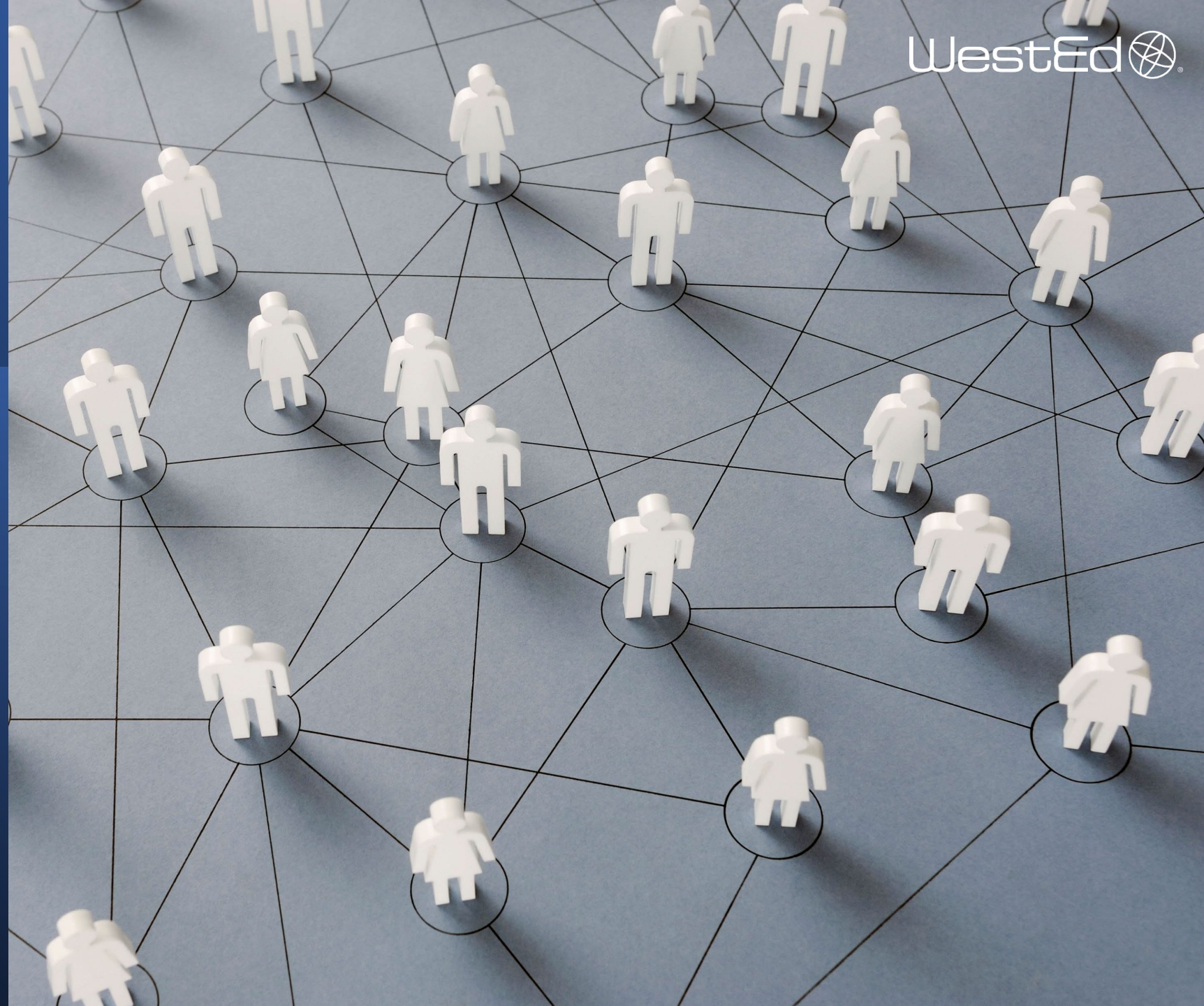
So then... How do TOPSpro Enterprise metrics translate to the AEP Dashboard metrics?

TOPSpro Data Source Elements	<p>CurrentAge (Calculated) TotalPYHours IsAEBGProgramAreaESL ProgramYear</p>
TOPSpro Calculations	<p>AE 202 Students who met all of the following criteria:</p> <ul style="list-style-type: none"> • An adult education student age 16+ <p>WHERE CurrentAge ≥ 16</p> <ul style="list-style-type: none"> • AND with 12 or more hours across all program areas <p>AND TotalPYHours ≥ 12 across program year</p> <ul style="list-style-type: none"> • In the selected year <p>AND ProgramYear is within the selected year</p> <ul style="list-style-type: none"> • Who Enrolled in an ESL (or ELL) program area <p>WHERE IsAEBGProgramAreaESL = 1</p> <ul style="list-style-type: none"> • In the selected year <p>AND ProgramYear is within the selected year</p>

So then... How do you make them match

<p>TOPSpro Data Source Elements</p>	<p>CurrentAge (Calculated) TotalPYHours IsAEBGProgramAreaESL ProgramYear</p>
<p>TOPSpro Calculations</p>	<p>AE 202 Students who met all of the following criteria:</p> <ul style="list-style-type: none"> • An adult education student age 16+ <p>WHERE CurrentAge ≥ 16</p> <ul style="list-style-type: none"> • AND with 12 or more hours across all program areas <p>AND TotalPYHours ≥ 12 across program year</p> <ul style="list-style-type: none"> • In the selected year <p>AND ProgramYear is within the selected year</p> <ul style="list-style-type: none"> • Who Enrolled in an ESL (or ELL) program area <p>WHERE IsAEBGProgramAreaESL = 1</p> <ul style="list-style-type: none"> • In the selected year <p>AND ProgramYear is within the selected year</p>

Connecting The Dots (or Bubbles)



Identifying Students and Programs from CASAS

INSTRUCTIONAL PROGRAM

Entry Record Field 11/Update Record Field 5

- Basic Skills (ABE)
- ESL/ELL
- High School Diploma (HSD)
- High School Equivalency (HSE)
- Career and Technical Education (CTE)
- Adults w/ Disabilities
- Adults Supporting K12 Student Success

} Adult
Secondary
Education
(ASE)



1+ HOURS
OR
SERVICES RECEIVED
Update Record Field 8
Any service



**Reportable
Individual
or Adults
Served**

HOURS OF INSTRUCTION
Update Record Field 11
Exported to AEP as total number of hours for the program year



12+ HOURS



Participant
*Used as
denominator for
most outcomes*

Identifying Progress from CASAS

Completed One or More Educational Functional Levels

- Participants (with 12+ instruction hours) from ABE, ESL, or ASE program areas



- Qualifying pre-test and other requirements for NRS Table 4



Flagged as ‘CompletedLevel’
Special field for AEP export – calculated from pretest and posttest

Completed a Workforce Preparation Milestone

- Participants (with 12+ instruction hours)



LEARNER RESULTS

Update Record Field 9: WORK

- Acquired workforce readiness skills
- Training milestone

Completed an Occupational Skills Gain

- Participants (with 12+ instruction hours)



LEARNER RESULTS

Update Record Field 9: WORK

- Met work-based project goal
- Training milestone

Identifying Transition from CASAS

Transition to ASE

- Participants (with 12+ instruction hours) from ABE and ESL program areas



INSTRUCTIONAL PROGRAM

Entry Record Field 11/Update Record Field 5

- High School Diploma (HSD)
- High School Equivalency (HSE)



- For the 1st time in the same or following year

Transition to Postsecondary

- Participants (with 12+ instruction hours) from ABE, ESL, or ASE program areas



Flagged as 'HasTransitionToPostSecondary'
Special field for AEP export – Mix of Learner Results from Work and Education

OR

Enrolled in a CTE Program



- For the 1st time in the same or following year

Identifying Transition from CASAS

Transition to CTE

- Participants (with 12+ instruction hours) from ABE, ESL, or ASE program areas



Enrolled in a CTE Program

OR

LEARNER RESULTS

Update Record Field 9: WORK

- Entered job training
- Entered training program
- Entered apprenticeship



- For the 1st time in the same or following year

Transition to Credit College

- Participants (with 12+ instruction hours) from ABE, ESL, or ASE program areas



LEARNER RESULTS

Update Record Field 9: EDUCATION

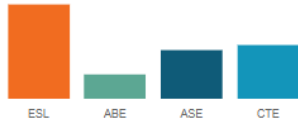
- Transition to credit (transfer)
- Transition to credit (non-transfer)



- For the 1st time in the same or following year

868,580

Total Adults Served



Students and Programs

Explore program enrollment, student demographics, and barriers to employment.

[View Students and Programs](#)



Progress

Learn about skills gains in adult basic ESL, workforce preparation, and CTE

[View P](#)

Select an Earlier Year



CTE Certificate

Success

Information on completion of diplomas, certificates, and college credit awards.

[View Success](#)

Select an Earlier Year

Employment and Earnings

Access 2nd and 4th quarter employment earnings, and earning gains data.

[View E](#)

AEP Score Card

Consortium, member, and regional performance on the Measuring Our Success metrics.

[View AEP Score Card](#)

Transition

Learn about student transition into postsecondary education and college credit pathways.

[View Transition](#)

CAEP Outcomes

Year	Passed 1-3 (F)	Other Literacy Gains (G)	HSD/HSE Achieved (H)	Post-Secondary Achieved (I)	Enter Employment Achieved (J)	Increase Wages Achieved (K)	Transition Post-Sec Achieved (L)	Enrollees (M)	Enrollees with any Services Received (N)	Support Services Received (O)
2010	622	776	8	35	315	86	5	1,534	126	68
2011	48	249	58	9	56	14	6	447	261	9
2012	103	372	17	167	114	49	41	491	148	19
2013	103	293	17	100	102	49	24	405	109	19
2014	0	0	0	0	0	0	0	0	0	0
2015	1	1	0	0	1	0	0	200	0	0
2016	0	1	0	0	0	0	0	1	1	0
2017								18	1	1
2018	877	1,692	100	311	588	198	76	3,096	646	116
2019	138	332	22	100	110	50	24	476	145	23
2020	622	776	58	172	371	106	45	2,321	409	74

which they are enrolled.

Adult Education Pipeline

CAEP Summary Report



Why do CAEP reports and the AEP Dashboard charts not always match?

CAEP Summary Data & AEP Data

CAEP Program Enrollment							
Enrolled in ESL	Enrolled in ABE	Enrolled in ASE	Enrolled in CTE	Enrolled in AWD	Enrolled in Adults Training to Support Child School Success	Enrolled in Workforce (re) Entry	Enrolled in Preapprenticeship
1534	184	636	491	1	200	405	0
Enrolled in ESL	Enrolled in ABE	Enrolled in ASE	Enrolled in CTE	Enrolled in AWD	Enrolled in Adults Training to Support Child School Success	Enrolled in Workforce (re) Entry	Enrolled in Preapprenticeship
1194	119	285	421*		189	340*	
NOTE: Must be a Participant (enrolled in a CAEP Program with 12+ instructional hours) to be included in these metrics						Subset of Participants Enrolled in CTE	

CAEP Summary Data & AEP Data

	Literacy Gains (Pre/Post)		
CAEP Summary Report	Enrollees (B)	Enrollees with pre/post (C)	EFL Gains Achieved (D)
Member Total Unduplicated Count	1314	913	528
AEP Dashboard	Participants in ESL, ABE, ASE (Denominator - does not display)		Completed One or More EFL
Member Total Unduplicated Count	1417	n/a	532
NOTES on LaunchBoard AEP Values *Participants are enrolled in one of the CAEP program areas and have 12+ instructional hours in the Program Year	Special denominator for EFL Gains and Transition to Postsecondary metric.	Not reported on the dashboard	Includes participants who achieved COMIS outcome - student assessment or course progression

CAEP Summary Data & AEP Data

	CAEP Outcomes							
CAEP Summary Report	Enrollees (E)	Passed I-3 (F)	Other Literacy Gains (G)	HSD/HSE Achieved (H)	Post Secondary Achieved (I)	Entered Employment Achieved (J)	Increased Wages Achieved (K)	Transition to Post Secondary Achieved (L)
Member Total Unduplicated Count	1802	622	776	58	172	371	106	45
AEP Dashboard	Participants	Completed an Immigrant Integration Milestone		Participants Who Earned a Diploma, GED or High School Equivalency	Participants Who Completed a Postsecondary Credential	Employment 2 Quarters After Exit	Change in Earnings	Transition to Postsecondary
Member Total Unduplicated Count	1787	none listed for 18-19 377 for 19-20	n/a	57	190	203	42% among 30 people	278
NOTES on LaunchBoard AEP Values	Participants are enrolled in one of the CAEP program areas and have 12+ instructional hours in the Program Year	New data element, I3, introduced for 2019-2020	Not reported on the dashboard	Includes participants who achieved COMIS outcome	Includes participants who achieved COMIS outcome	Based on match with EDD wage file for students with SSNs and no enrollment anywhere in the following year	Different measure used. Values based on match with EDD wage file for students with SSNs and no enrollment anywhere in the following year	Includes participants who achieved COMIS outcome and gives students an additional year to achieve transition - data will lag by 1 year

CAEP Summary Data & AEP Data

	Services					
CAEP Summary Report	Enrollees (M)	Enrollees Who Received Any Services (N)	Supportive Services Received (O)	Training Services Received (P)	Transition Services Received (Q)	Career Services Received (R)
Member Total Unduplicated Count	2321	409	74	42	266	175
AEP Dashboard	Reportable Individuals	Students With an Enrollment Who Received Services				
Member Total Unduplicated Count	2310	404	n/a	n/a	n/a	n/a
NOTES on LaunchBoard AEP Values	Reportable Individuals are either enrolled with 1+ instructional hours OR received any services	Subset of Reportable Individuals	Not reported on the dashboard			

In summary,
differences
occur based on:

- Who is included (COMIS & TE)
- Data sources
- Definitions
- Reporting structure
- Validation & Deduplication
- No survey data included

AEP Purposes*



**Not a singular all-purpose tool*

- Does not provide real time data
- Identifying Trends, Patterns, Gaps, Achievements
- Asking good questions
- Planning
- Evaluation
- Explore
 - Equity
 - Demographics
 - Student Status
 - Outcomes
- Identify Collaborators

Discussion

Questions & Answers

Thank You!



Jessica Chittaphong

AEP Dashboard Manager &
Program Coordinator

jchitta@wested.org



Blaire Willson Toso

Sr. Program Manager
Adult Ed & Workforce Dev

btoso@wested.org



Jay Wright

California Accountability Program
Manager

jwright@casas.org